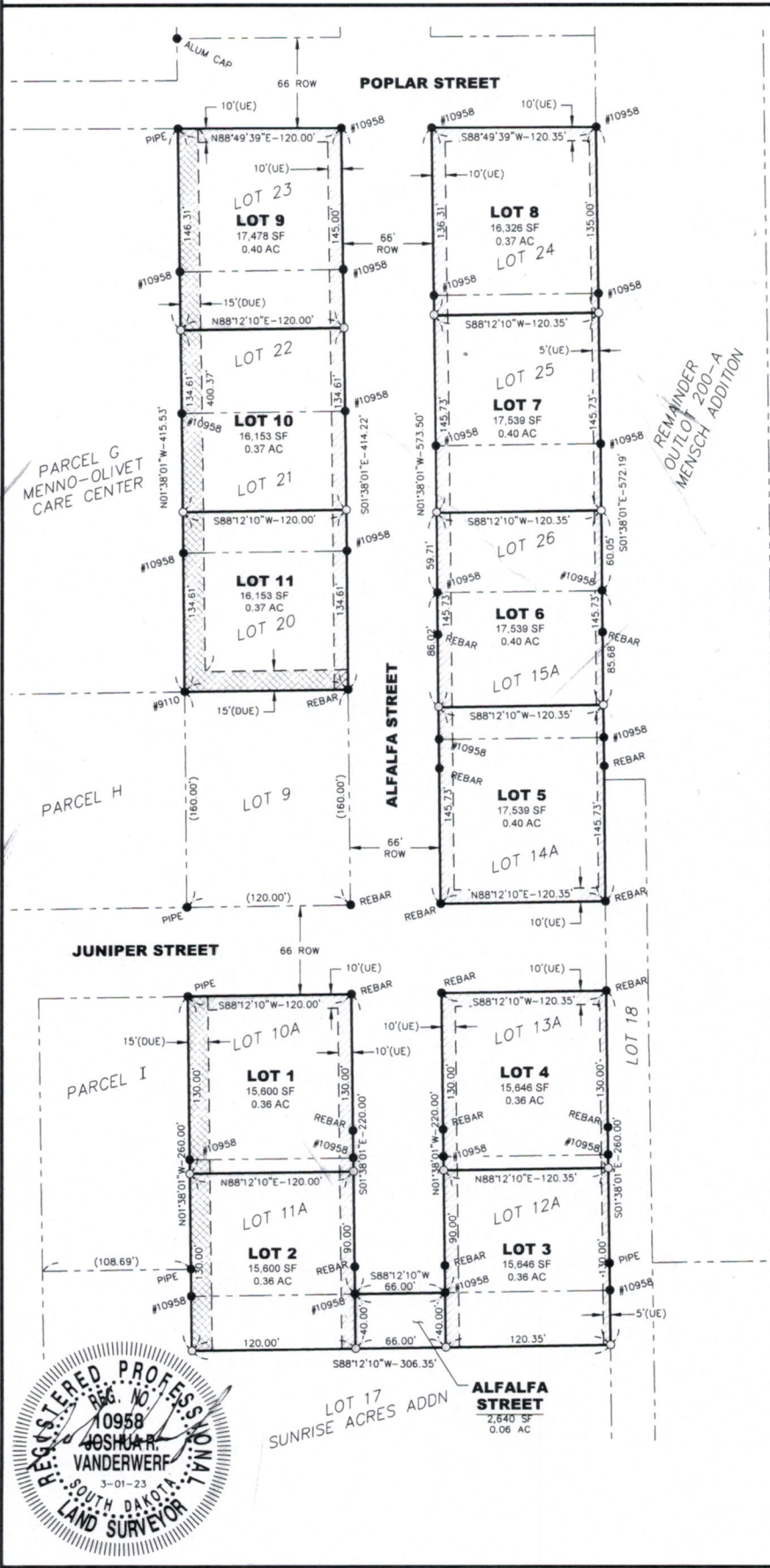


PLAT OF LOTS 1-11 IN
SUNRISE ACRES 2ND ADDITION
 TO THE CITY OF MENNO, HUTCHINSON COUNTY, SOUTH DAKOTA



PARCEL G
 MENNO-OLIVET
 CARE CENTER

PARCEL H

JUNIPER STREET

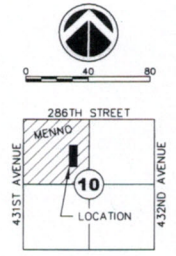
PARCEL I

POPLAR STREET

ALFALFA STREET

ALFALFA STREET
 2,540 SF
 0.06 AC

REMAINDER
 OUT OF 200-A
 MENSCH ADDITION



LEGEND

- EXISTING EASEMENT LINE
- PROPERTY LINE
- RIGHT OF WAY LINE
- CENTER LINE
- SECTION LINE
- QUARTER LINE
- SIXTEENTH LINE
- PLATTED PROPERTY LINE
- (UE) UTILITY EASEMENT
- (DUE) DRAINAGE & UTILITY EASEMENT
- FOUND MONUMENT
- SET 5/8" X 18" CAPPED REBAR
- FOUND SECTION CORNER
- PREVIOUSLY PLATTED DIMENSION

- GENERAL NOTES:**
- BASIS OF BEARINGS FOR THIS DRAWING IS NAD83 SOUTH DAKOTA STATE PLANES, SOUTH ZONE, US FOOT.
 - RESEARCH OF EXISTING EASEMENTS OF RECORD WAS NOT PERFORMED.



DGR ENGINEERING
 1300 S HIGHLINE AVENUE
 SIOUX FALLS, SD 57110
 (605) 339-4157 office
 (605) 339-4175 fax
 dgr.com